

UpRight

boom lifts

rough terrain articulated

Working height up to 68ft.
(20.9m) horizontal outreach
to 35ft. (10.7m) with up and over
clearance of 30ft. (9.1m)

75 seconds to full extension

Multi-function proportional controls
for smooth, fast positioning

40% (22°) gradeability

Zero tail swing

4WD with oscillating front axle

Jib pivots above and below
upper boom

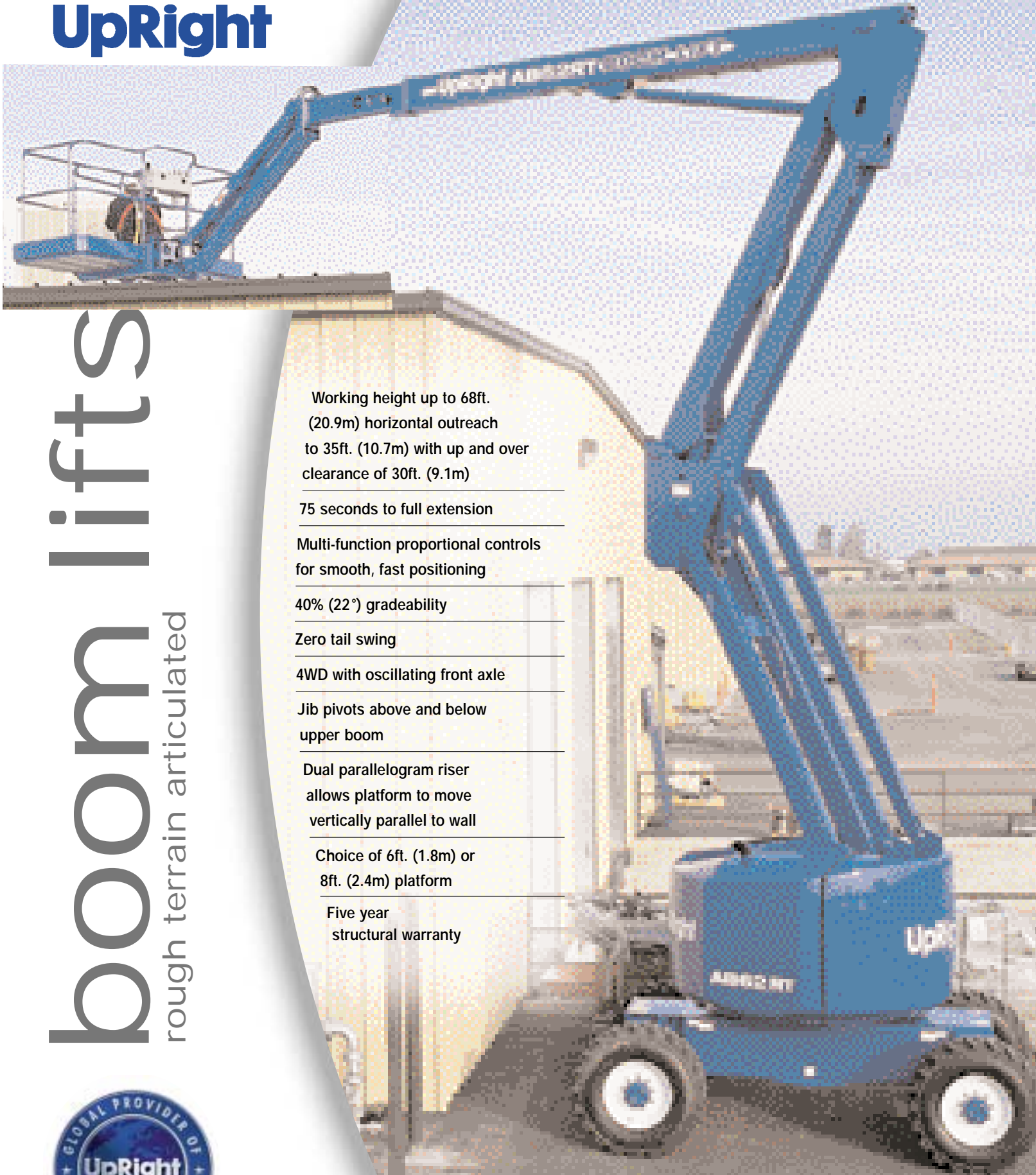
Dual parallelogram riser
allows platform to move
vertically parallel to wall

Choice of 6ft. (1.8m) or
8ft. (2.4m) platform

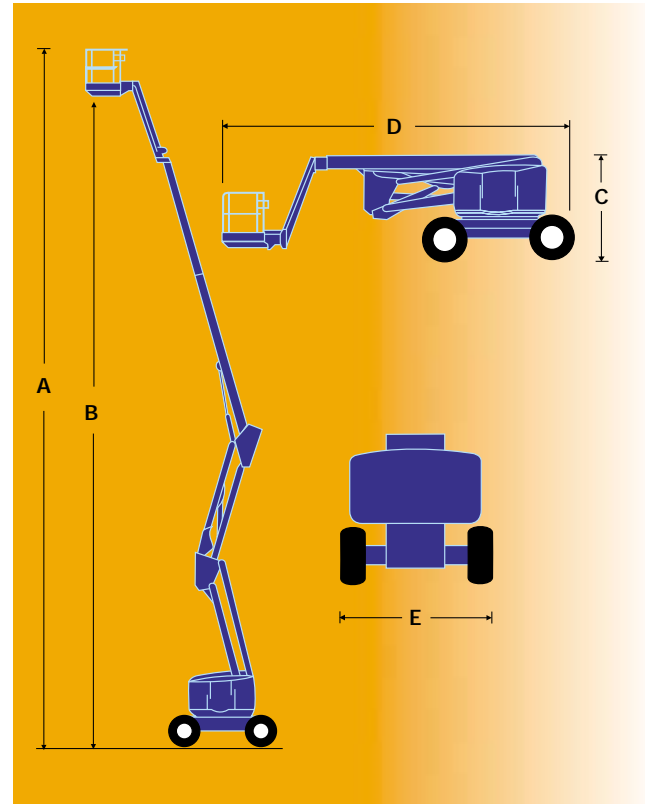
Five year
structural warranty



Photograph shown CE model



specifications	AB62RT 4WD Diesel	AB62RT 4WD Dual fuel
working height (A)	68ft. (20.9m)*	68ft. (20.9m)*
platform height (B)	62ft. (18.9m.)	62ft. (18.9m.)
horizontal outreach	35ft. (10.7m.)	35ft. (10.7m.)
up/over clearance	30ft. (9.1m.)	30ft. (9.1m.)
jib length	6ft. 4ins. (1.9m.)	6ft. 4ins. (1.9m.)
jib arc	140°	140°
6 ft. platform size - outside	39ins. (1.0m.) x 72ins (1.83m.)	
8 ft. platform size - outside	39ins. (1.0m.) x 96ins. (2.4m.)	
platform capacity 6ft. or 8ft. (max)	500lbs. (227kg)	500lbs. (227kg)
platform rotation	180°	180°
turret rotation	continuous	continuous
stowed height (C)	8ft. 2ins. (2.5m.)	8ft. 2ins. (2.5m.)
stowed length (D)	27ft. (8.2m.)	27ft. (8.2m.)
stowed width (E)	7ft. 7.5ins. (2.3m.)	7ft. 7.5ins. (2.3m.)
inside turning radius	8ft. (2.5m.)	8ft. (2.5m.)
outside turning radius	18ft. (5.5m.)	18ft. (5.5m.)
tailswing - stowed	0	0
drive speed - boom stowed, high	4.25mph. (6.8km/h.)	4.25mph. (6.8km/h.)
- boom stowed, low	1.6mph. (2.6km/h.)	1.6mph. (2.6km/h.)
drive speed - boom elevated	0.6mph. (0.96km/h.)	0.6mph. (0.96km/h.)
gradeability	40% (22°)	40% (22°)
energy source	perkins 704-30	GM 3.0L
tires U.S.	air-filled	air-filled
CE.	poly-filled	poly-filled
ground clearance	12.5ins.(0.32m.)	12.5ins.(0.32m.)
toeboards	6ins. (152mm.)	6ins. (152mm.)
guardrail height	45ins. (1.14m.)	45ins. (1.14m.)
weight	23,700lbs. (10,750kg.)	23,700lbs. (10,750kg.)
cycle time to full height	75 secs.	75 secs.



*Working height in the U.S. is 6 ft. above platform height. Metric working height is 2m above platform height.

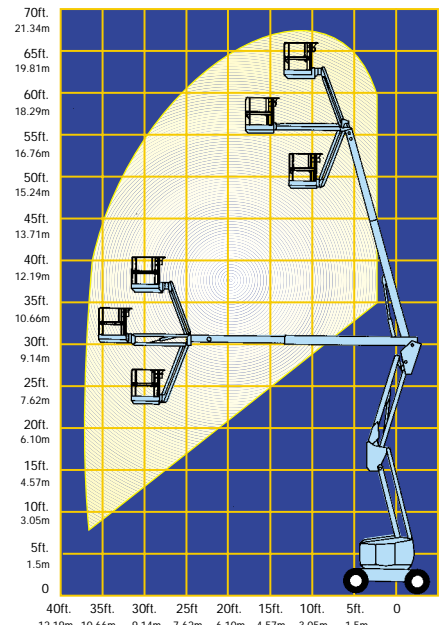
Specifications subject to change without notice. Photos and diagrams in this brochure are for promotional purposes only. Refer to appropriate UpRight Operators manual for detailed instructions on the proper use and maintenance of this equipment.

standard features

- Multi-function platform controls
- Oscillating front axle
- Electric proportional controls
- Power to platform
- Hour meter
- 1 year parts/service
- 5 year structural warranty

options

- All motion alarm
- Flashing amber beacon
- 8 ft. (2.4m.) platform
- Generator
- Poly-filled tires (U.S.)
- Air-filled tires (CE.)
- Special paint colors
- Environmental green oil



Meets or exceeds applicable requirements of OSHA and ANSI A92.5 - 1992.

CE This product is available with the CE mark confirming compliance with all relevant European Machinery Directives

manufactured by
UpRight

UpRight

www.upright.com
e-mail: marketing@upright.com

GLOBAL PROVIDER OF ACCESS SOLUTIONS

MANUFACTURING

North America
Tel +1 (559) 662 3900
Fax +1 (559) 673 6184

Europe
Tel + 353 1 620 9300
Fax + 353 1 620 9301

SALES

USA / The Americas
Tel +1 (559) 662 3900
Fax +1 (559) 673 6184

Europe/Africa/M. East
Tel + 44 (0) 1952 685 200
Fax + 44 (0) 1952 685 255

France
Tel + 33 130 37 05 44
Fax + 33 130 37 63 68

Germany
Tel + 49 2103 98950
Fax + 49 2103 989549

Singapore
Tel + 65 6324 1322
Fax + 65 6225 5157

Australia
Tel + 61 2 9748 6200
Fax + 61 2 9748 6255

P. R. China
Tel + 86 21 63390190
Fax + 86 21 63390191

Japan
Tel + 81 3 5765 6841
Fax + 81 3 5765 6840