

TB100J



Straight Jib Boom



www.snorkelusa.com

TB100J

TELESCOPING JIB BOOM

PLATFORM

Height.....	100' (30.4 m)
A. Size.....	30" x 92" (76 x 234 cm)
Capacity.....	600 lbs (272 kg)
Construction.....	High strength aluminum alloy

MACHINE DIMENSIONS

B. Stowed Height.....	10' 4" (3.2 m)
C. Stowed Length.....	44' 6" (13.6 m)
D. Wheelbase.....	12' (3.7 m)
Width (Stowed).....	8' 6" (2.6 m)
Width (axle extended).....	12' 10" (3.9 m)
Weight.....	33,000 lbs
Tire Size (Foam Filled).....	15 x 22.5

PERFORMANCE

Horizontal Reach.....	66' (20.1 m)
Power Source.....	Gas or Diesel
Fuel Capacity.....	40 gal (151.4 l)
Hydraulic tank cap.....	90 gal (340 l)
Drive speed	
Elevated.....	Creep
Stowed.....	3 mph (4.8 kph)
Gradeability.....	25%

OPTIONS

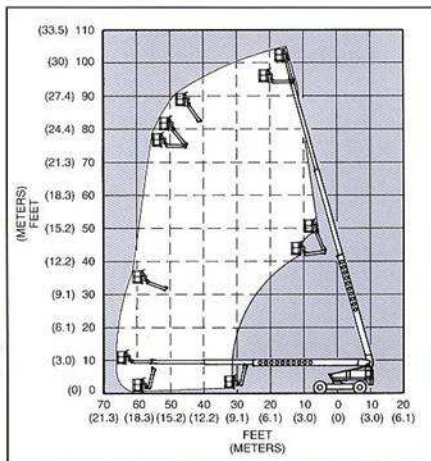
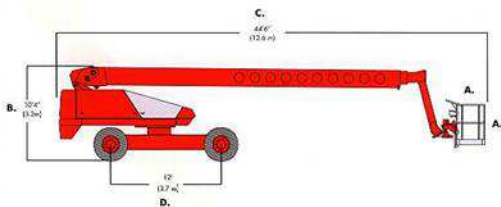
- Platform control box cover
- Platform work and drive lights
- Flashing light on turntable
- Swinging gate
- Sandblast protection kit
- Hydraulic system cold weather warm-up kit
- Dual Fuel
- Cold weather start kit
- AC Generator
- Drive motion alarm
- Tow kit
- Four wheel drive
- Airline to platform
- Spark arrestor muffler
- Self-stowing platform
- 4-wheel drive (4 x 4) adds mid-range drive speed (1.5 mph, 2.4 kph) 30% gradeability

DANGER: Models described in this brochure are NON-INSULATED and do not provide electrocution protection from contact with or close proximity to energized conductors which is pointed out on decals and placards attached to the machine.

Only qualified and trained operators are to be authorized to use and operate a work platform. Aerial work platforms must be elevated only on firm, level surface. Products in this brochure comply with applicable ANSI Standards. This literature is for illustrative purposes only. Consult Operating Maintenance and Parts Manuals for proper procedures. Specifications may vary and are subject to change without notice or obligation.

STANDARD FEATURES

- Fully proportional ramp-on controls
- Envelope Management System
- 180 degree hydraulic platform rotation
- 12 volt emergency power
- Manual bleed down valve
- Engine anti-restart
- Oil level/temp gauges
- Driveable at full height
- Tilt alarm
- 125 volt GFCI AC outlet
- Aluminum upper booms
- Hour meter
- High engine temp/low oil pressure shut down
- Tie down lug
- Extendable rear axles
- Built-in chassis jack
- Operator horn
- Lifting lug



Snorkel

An ISO 9001 Registered Company
Printed in U.S.A. TB100J 10-02

Manufacturing Plant

2009 Roseport Road
Elwood, KS 66024
800-255-0317 Toll Free
785-989-3000 Office
785-989-3070 Fax

Australia

26 Redfern Road
Wetherill Park NSW
2164 Australia
(02) 9725 4000 tel
(02) 9609 3057 fax

Courtesy of Crane.Market