

UpRight SB80

boom lifts

4WD telescopic

Working height up to 26.4m
(86ft.) telescopic boom

140° jib arc

22m (72ft.) horizontal outreach

4WD, oscillating front axle

Power out axles extend
in 10 seconds

Excellent manoeuvrability
in rough terrain

22° (40%) gradeability

Smooth, user friendly
proportional controls: lifting,
telescoping, rotation

Responsive - 90 seconds
to 24.4m (80ft.) full height

272 kg (600lbs) capacity with
choice of 1.83m (6ft.) or
2.44m (8ft.) platforms

180° hydraulic platform rotation

360° continuous rotation

Five year
structural warranty



specifications

	SB80 4WD Diesel
working height	26.4m. (86ft.)*
platform height	24.4m. (80ft.)
horizontal outreach	22m. (72ft.)
jib length	2.4m. (8ft.)
jib arc	150°
platform size - outside (C)	1m. (39ins.) x 1.83m. (72ins.)
capacity 6 ft. or 8 ft. platform	272kg. (600lbs.)
platform rotation	180°
turret rotation	continuous
stowed height	2.72m. (8ft. 11ins.)
stowed length (A)	11.5m. (37ft. 8ins.)
stowed width (B)	2.44m. (8ft.)
inside turning radius	3m. (9ft. 10ins.)
outside turning radius	6.7m. (22ft. 2ins.)
tailswing - stowed	1m. (3ft. 3ins.)
drive speed - boom stowed	5.2km/h. (3.25mph.)
drive speed - boom elevated	1.2kmh. (0.7mph.)
gradeability - 4WD	22° (40%)
energy source	Perkins 100-42 86 hp
tyres	poly-filled
ground clearance	0.3m (12ins.)
toeboards	0.15m. (6ins.)
guardrail height	1.14m. (45ins.)
gross weight	14,750kg. (32,500lbs.)
cycle time to full height	90 secs.

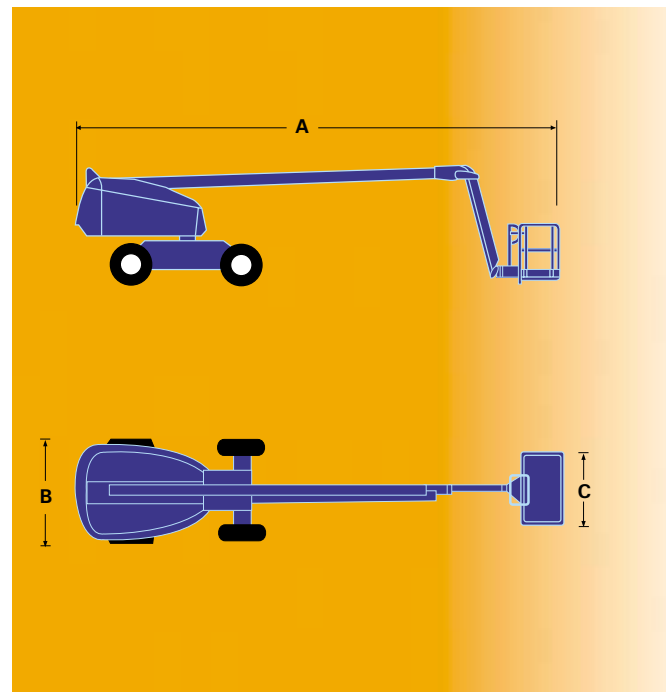
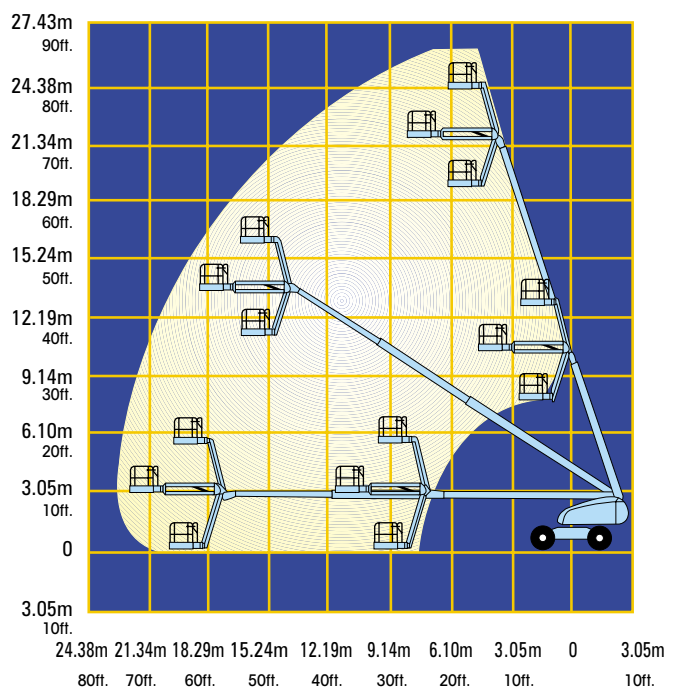
*Metric working height is 2m above platform height. Working height in the U.S. is 6 ft. above platform height.
 Specifications subject to change without notice. Photos and diagrams in this brochure are for promotional purposes only.
 Refer to appropriate UpRight Operators manual for detailed instructions on the proper use and maintenance of this equipment.

standard features

- 4WD oscillating front axle
- Power-out extendable axles
- Proportional controls - lift, swing, telescope
- Power to platform
- Hour meter
- Horn
- 1year parts/service
- 5 year structural warranty

options

- All motion alarm
- Flashing amber beacon
- 200 watt hydraulic generator
- Diesel exhaust scrubber
- Optional 2.4m. (8ft.) platform
- Special paint colours
- Environmental green oil



Meets or exceeds applicable requirements of OSHA and ANSI A92.5 - 1992.

CE This product is available with the CE mark confirming compliance with all relevant European Machinery Directives

manufactured by
UpRight



www.upright.com
 e-mail: marketing@upright.com

GLOBAL PROVIDER OF ACCESS SOLUTIONS

MANUFACTURING

North America
 Tel +1 (559) 662 3900
 Fax +1 (559) 673 6184

Europe
 Tel + 353 1 620 9300
 Fax + 353 1 620 9301

SALES

USA / The Americas
 Tel +1 (559) 662 3900
 Fax +1 (559) 673 6184

Europe/Africa/M. East
 Tel + 44 (0) 1952 685 200
 Fax + 44 (0) 1952 685 255

France
 Tel + 33 130 37 05 44
 Fax + 33 130 37 63 68

Germany
 Tel + 49 211 1674316
 Fax + 49 211 1674317

Singapore
 Tel + 65 6324 1322
 Fax + 65 6225 5157

Australia
 Tel + 61 2 9748 6200
 Fax + 61 2 9748 6255

P. R. China
 Tel + 86 21 63390190
 Fax + 86 21 63390191

Japan
 Tel + 81 3 5765 6841
 Fax + 81 3 5765 6840