

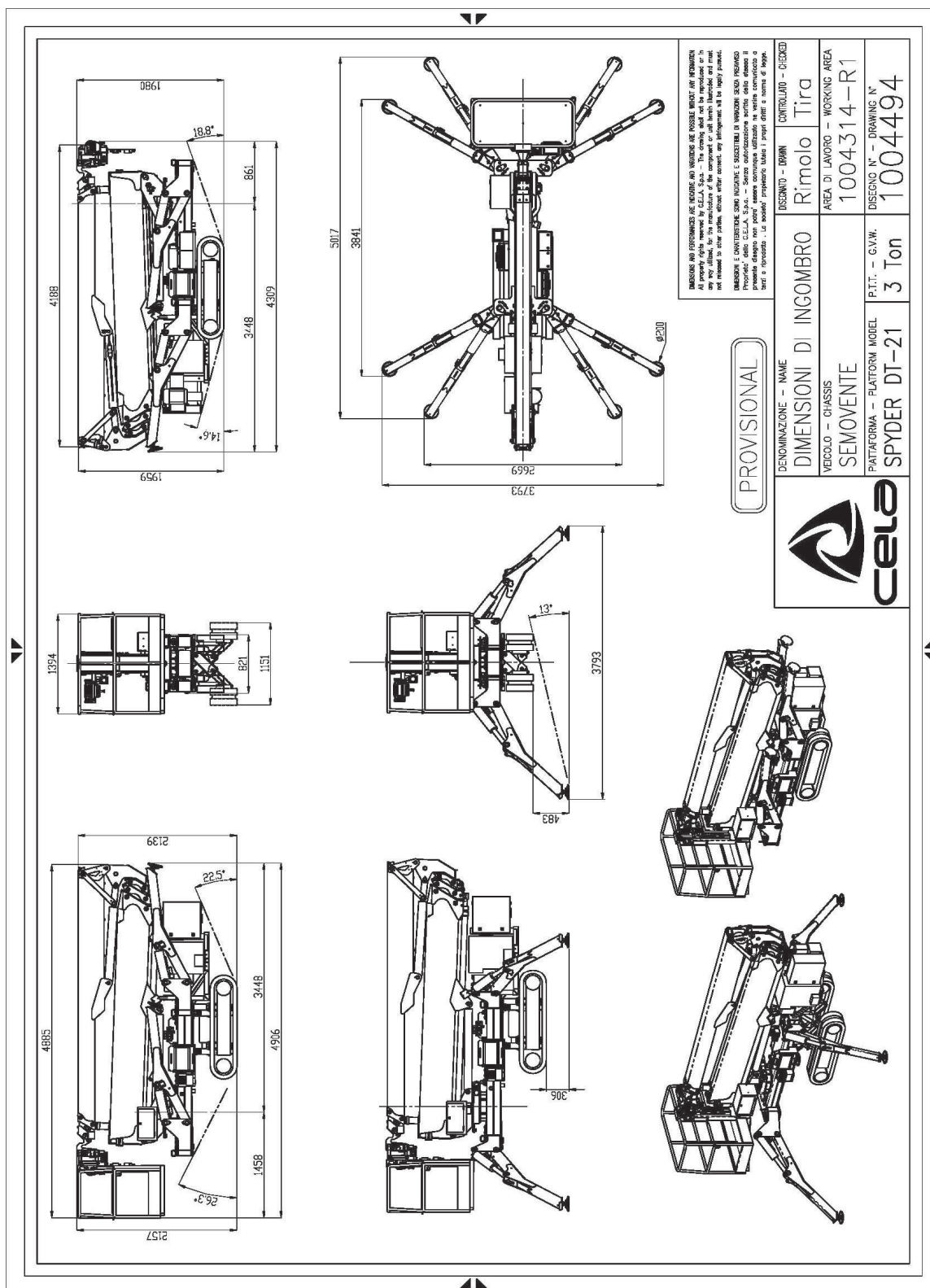


CELA
industry

Spyder DT21

**OPERATING AND MAINTENANCE MANUAL
ELEVATING AERIAL PLATFORM**

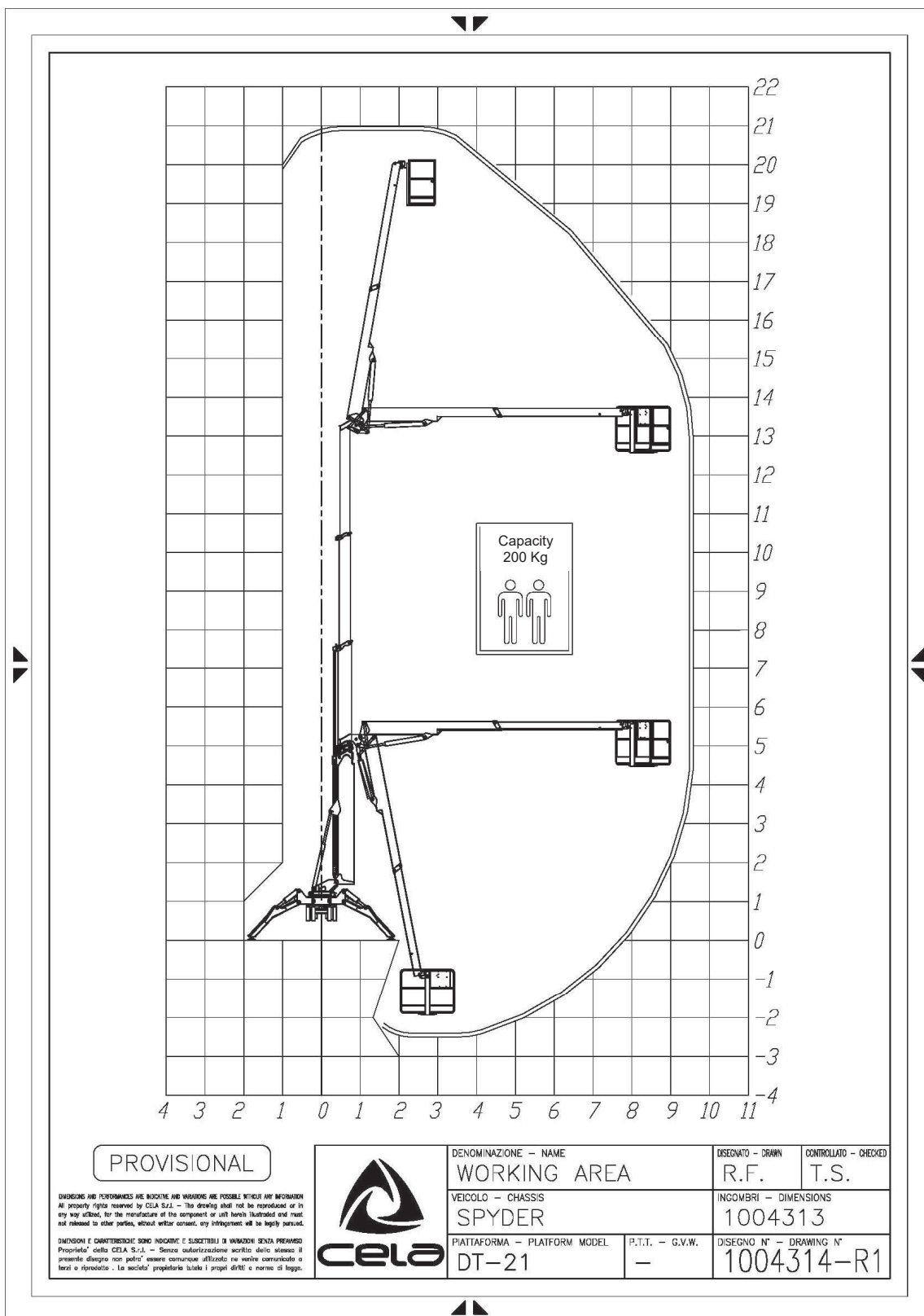
5 DIMENSIONAL DRAWING



CELA SRL

Via Dei Ponticelli trav. I° n°2/4 - 25040 CORTE FRANCA (BS) ITALY - Tel 0039 030 98 84 084 r.a. - Fax 0039 030 98 45 15
[http:// www.cela-it.com/](http://www.cela-it.com/) / e-mail info@cela-it.com

6 WORK AREA DIAGRAM

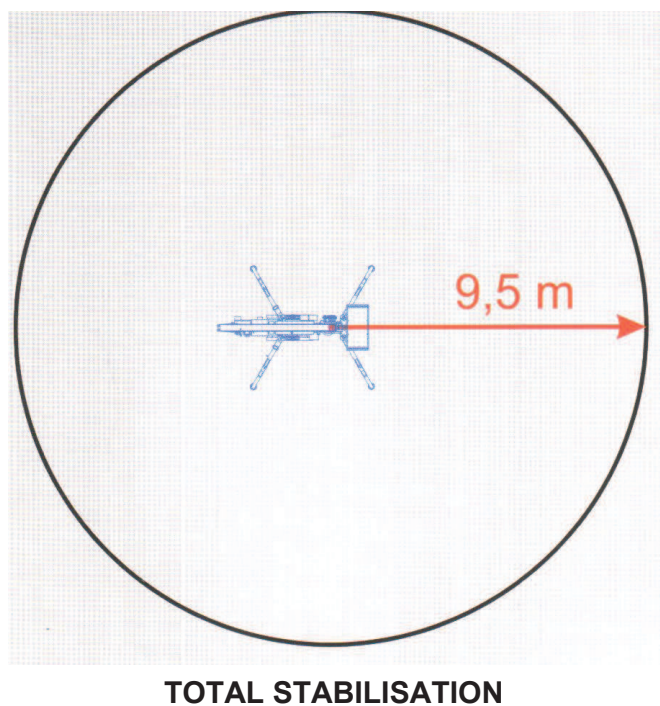
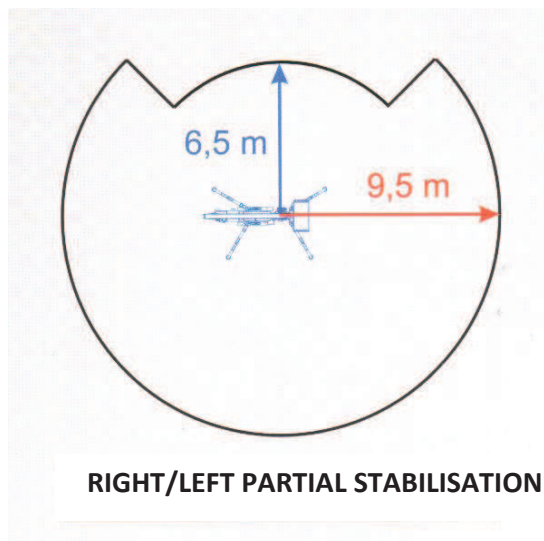
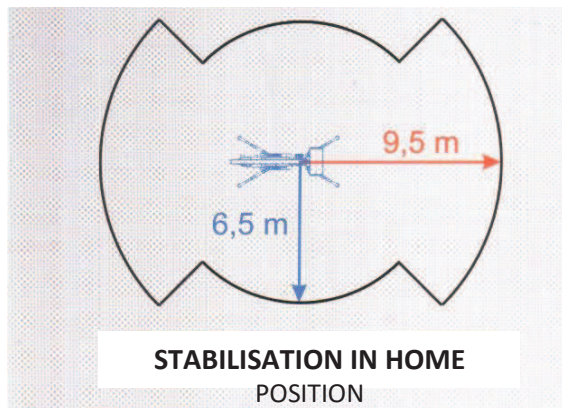


CELA SRL

Via Dei Ponticelli trav. I° n°2/4 - 25040 CORTE FRANCA (BS) ITALY - Tel 0039 030 98 84 084 r.a. - Fax 0039 030 98 45 15
[http:// www.cela-it.com](http://www.cela-it.com) / e-mail info@cela-it.com

7 OPERATIONAL CONFIGURATIONS

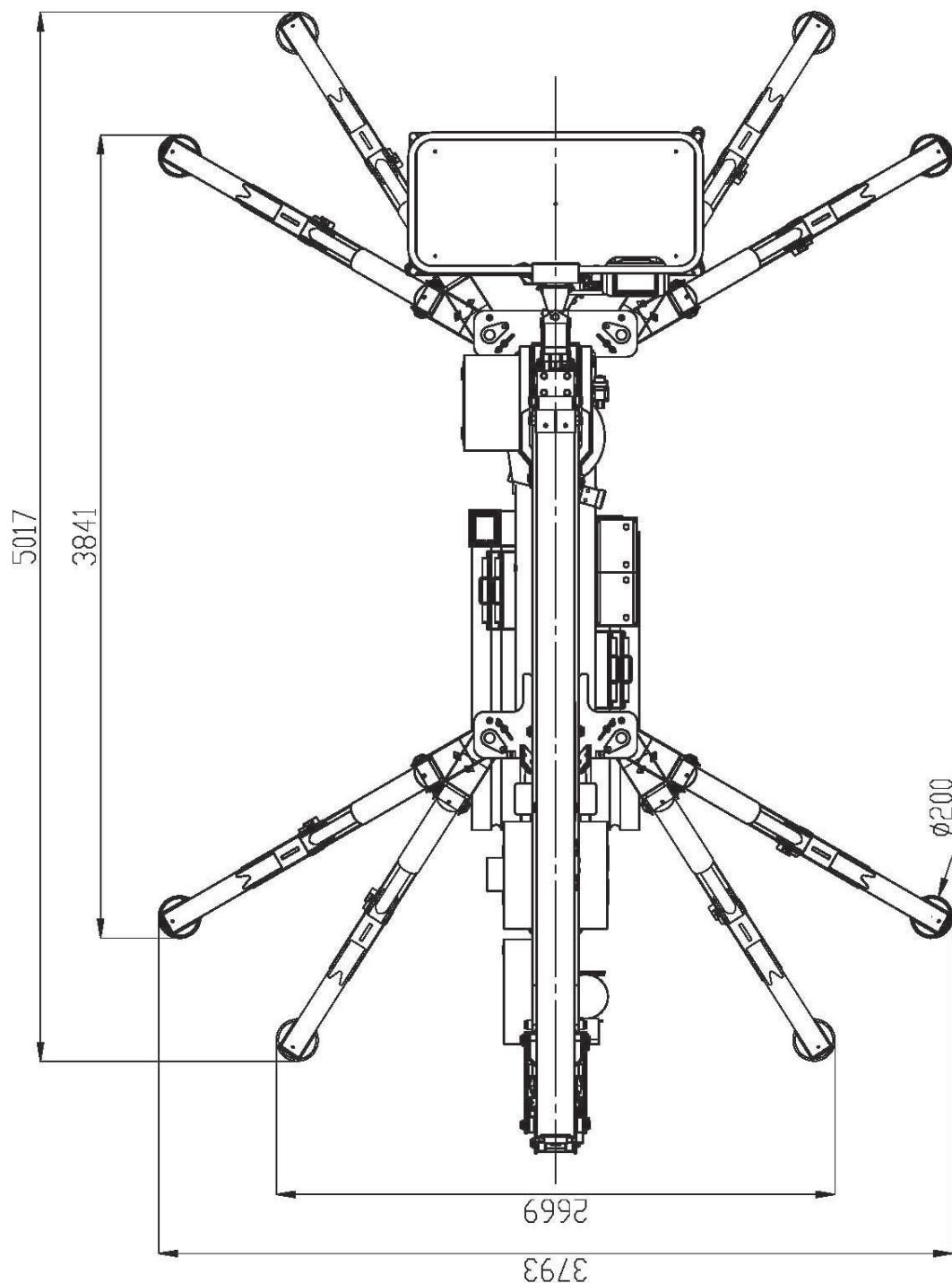
Fixed capacity 200 kg.



CELA SRL

Via Dei Ponticelli trav. I^ n°2/4 – 25040 CORTE FRANCA (BS) ITALY – Tel 0039 030 98 84 084 r.a. – Fax 0039 030 98 45 15
http// www.cela-it.com / e-mail info@cela-it.com

8 EQUIPMENT POSITIONING PROSPECTUS



CELA SRL

Via Dei Ponticelli trav. I^ n°2/4 – 25040 CORTE FRANCA (BS) ITALY – Tel 0039 030 98 84 084 r.a. – Fax 0039 030 98 45 15
[http:// www.cela-it.com](http://www.cela-it.com) / e-mail info@cela-it.com